

HOLTEC PROPRIETARY

D

C

B

A

HOLTEC PROPRIETARY

8

7

6

5

4

3

2

1

HOLTEC PROPRIETARY

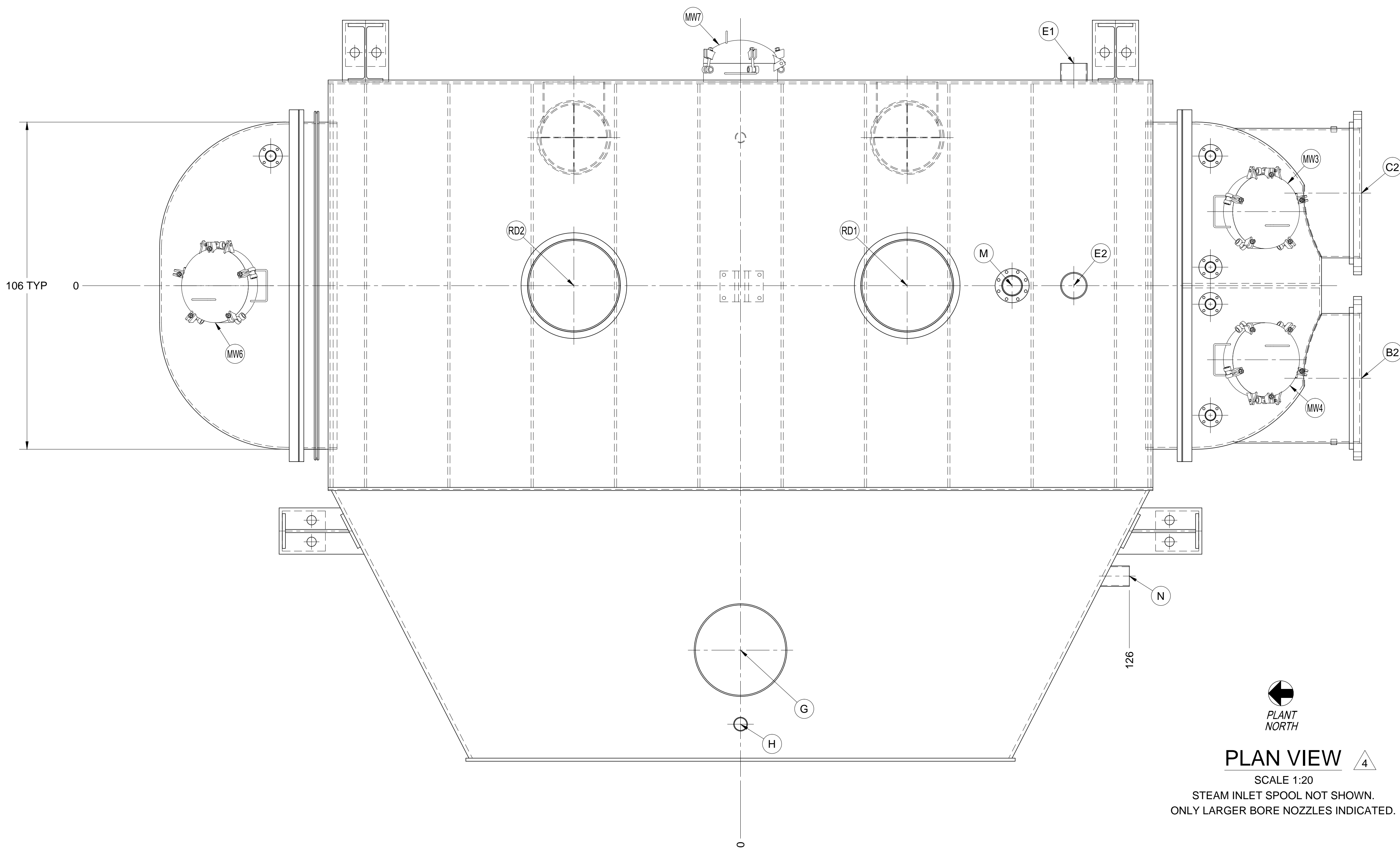
D

C

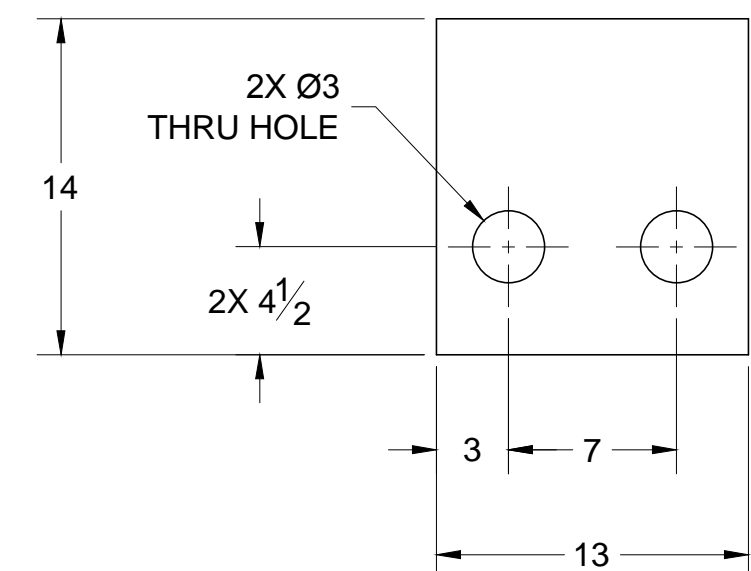
B

A

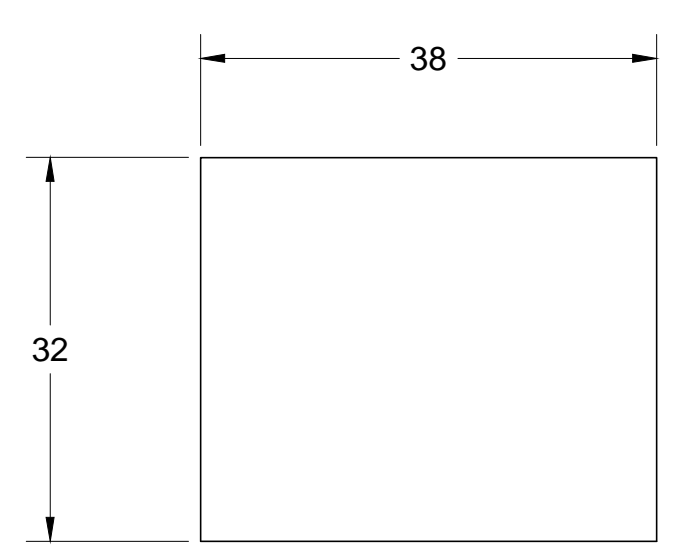
M014200-CNDA0001 506 R7



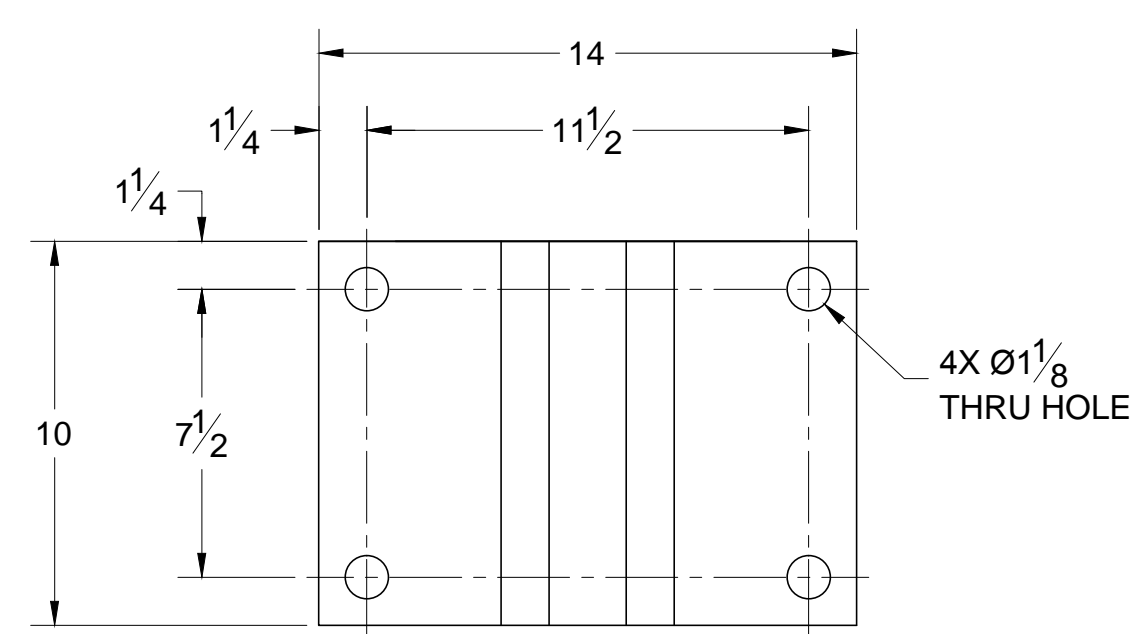
PLAN VIEW
 SCALE 1:20
 STEAM INLET SPOOL NOT SHOWN.
 ONLY LARGER BORE NOZZLES INDICATED.



LOW FRICTION BEARING PLATE DETAIL
 SCALE 1:8
 1/2" THICK (FURNISHED BY HOLTEC, SHIPPED LOOSE)
 THE SIDE UPON WHICH THE CONDENSER SOLE PLATE RESTS
 SHALL HAVE A SURFACE FINISH OF 125RA OR BETTER.



SHIM PLATE DETAIL
 SCALE 1:16
 1/2" THICK (FURNISHED BY HOLTEC, SHIPPED LOOSE)
 THE SIDE UPON WHICH THE CONDENSER SOLE PLATE RESTS
 SHALL HAVE A SURFACE FINISH OF 125RA OR BETTER.



KEEL GUIDE BLOCK DETAIL
 SCALE 1:5
 BOLTING BASE 1/2" THICK (FURNISHED BY HOLTEC, SHIPPED LOOSE)

UNLESS OTHERWISE SPECIFIED
 ALL DIMENSIONS ARE IN INCHES.
 BRACKETED [] DIMENSIONS ARE IN mm.
 DO NOT SCALE DRAWING.
 INTERPRET DIMENSIONING AND
 TOLERANCING PER ASME Y14.5M-1994.
 TOLERANCES PER APPLICABLE
 H.E.I. STANDARD.

REVISION IDENTIFIER
 NOZZLE IDENTIFIER
 THIRD ANGLE PROJECTION

THIS DRAWING IS THE INTELLECTUAL PROPERTY OF HOLTEC INTERNATIONAL. IT IS PROVIDED TO THE RECIPIENT UNDER THE EXPLICIT CONDITION THAT IT WILL NOT BE DUPLICATED IN WHOLE OR PART, OR GIVEN TO OTHERS WITHOUT WRITTEN CONSENT OF HOLTEC INTERNATIONAL.

		PROJECT / CLIENT GAINESVILLE RENEWABLE ENERGY CENTER, FAGEN, INC.	
POWER PLANT COMPONENTS DIVISION HOLTEC CENTER 555 LINCOLN DRIVE WEST MARLTON, NJ 08053 (USA)		TITLE GENERAL ARRANGEMENT DRAWING FOR STEAM SURFACE CONDENSER	
CLIENT JOB NO. 104009	ENGINEER ZACHRY ENGINEERING CORPORATION	LOCATION GAINESVILLE, FLORIDA	
CLIENT P.O. NO. 554652	SIZE D	PROJECT NO. 2135	DRAWING NO. 8284
CLIENT DOC. NO. O-A014200-SPCG481116	SHEET 5 OF 8	REV. 7	
FILE PATH: G:\PROJECTS\2135-0-DRAWINGS\GAI\8284_REV 7 PLOTTED July 30, 2012 1:57:06 PM BY TY PETRAKIS			

8

7

6

5

4

3

2

1